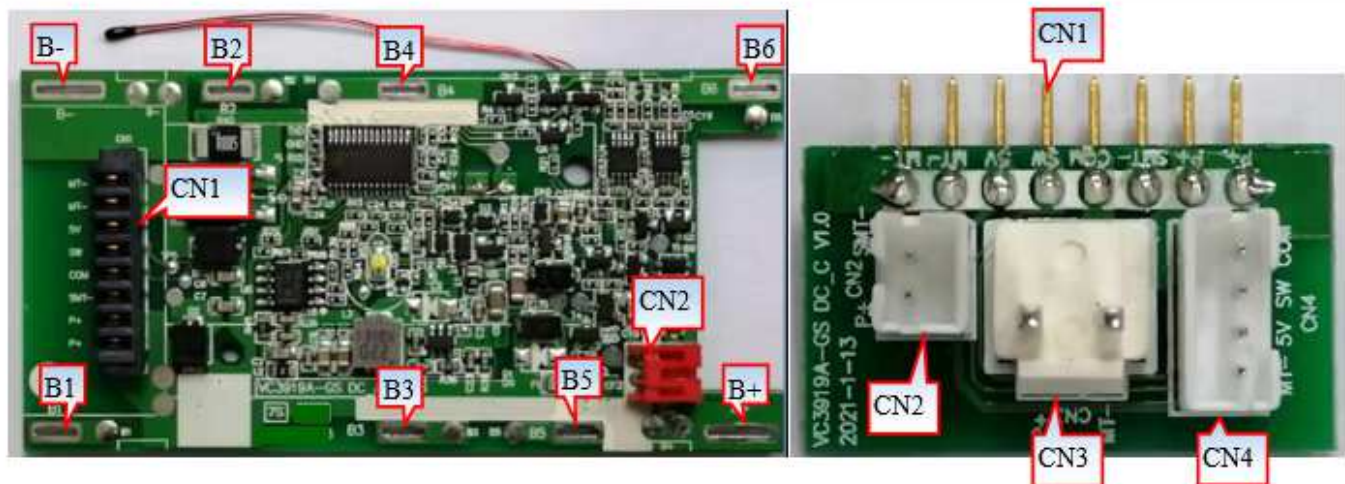


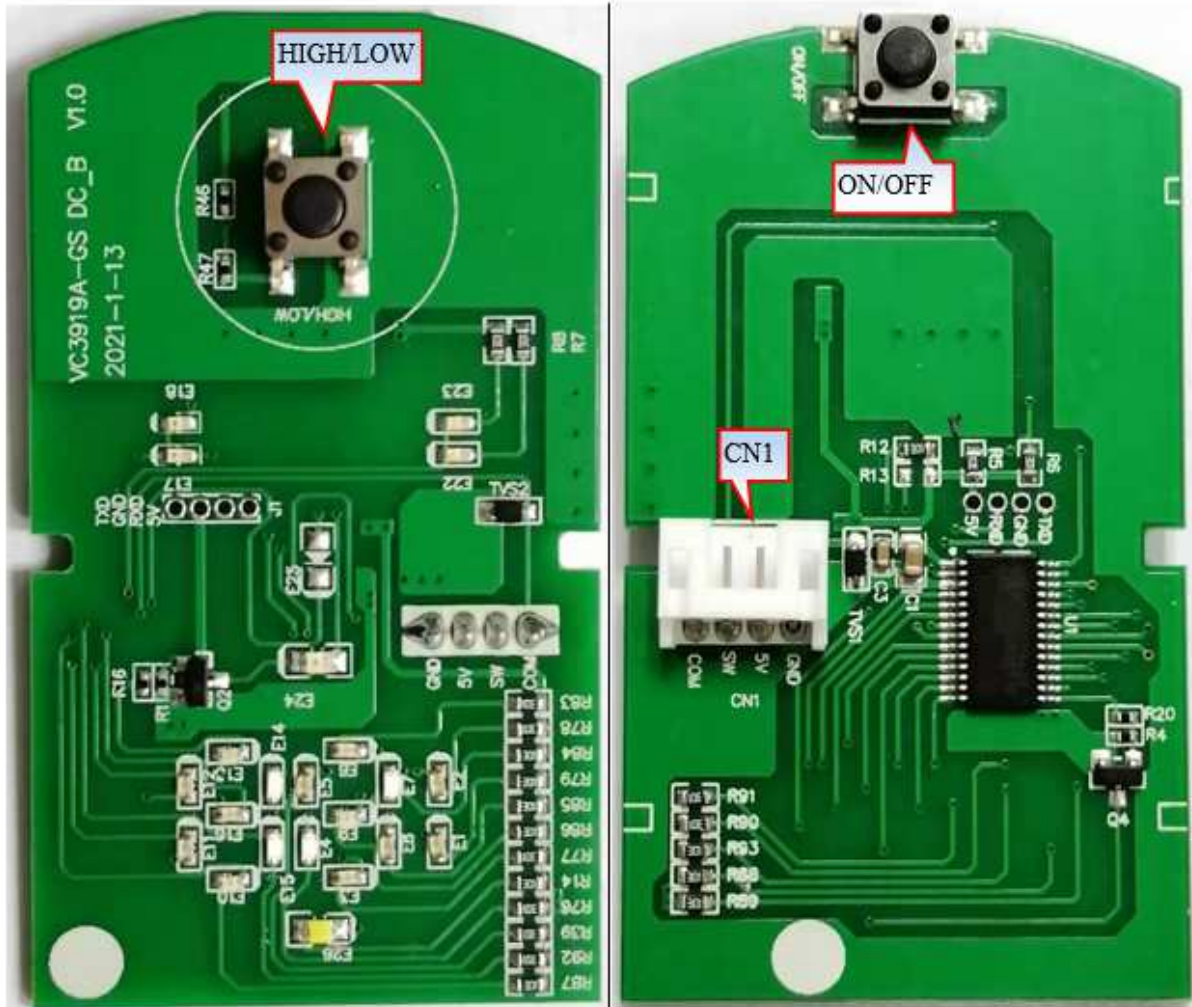
PCB MAINBOARD



Details	
MAINBOARD	
B-	Connect to Negative Side of Cell1.
B1	Connect to Positive Side of Cell 1.
B2	Connect to Positive Side of Cell 2.
B3	Connect to Positive Side of Cell 3.
B4	Connect to Positive Side of Cell 4.
B5	Connect to Positive Side of Cell 5.
B6	Connect to Positive Side of Cell 6.
B+	Connect to Positive Side of Cell 7
CN2	Connect the charger
CN1	Connect the adapter board
ADAPTER BOARD	
CN2	Connect the brush motor
CN1	Connect the main PCBA
CN4	Connect to the display board
CN3	Connect the main motor

Note: The power-on sequence requirements are as follows:

First go to B-, then connect to B1, B2, B3, B4, B5, B6, and finally connect to B+



Details	
DISPLAY BOARD	
HIGH/LOW	Speed control button
ON/OFF	Power button
CN1	Connect the adapter board